

2007 STATISTICS

This section includes data, by jurisdiction, on the number of persons taking and passing bar examinations in 2007, the number taking and passing bar examinations categorized by source of legal education, the number of and passage rates for first-time exam takers and repeaters, both overall and for graduates of ABA-approved law schools, the number of attorney candidates taking and passing special attorneys' examinations, and the number of disbarred or suspended attorneys taking and passing examinations as a condition of reinstatement.

Also included is a chart showing a longitudinal view of bar passage rates, both overall and for first-time takers, over a 10-year period. There is also a five-year snapshot, by jurisdiction, of the number of persons admitted by examination, on motion, and by diploma privilege, and the number of individuals licensed as foreign legal consultants.

Data for the first nine tables were supplied by the jurisdictions. In reviewing the data, the reader should keep in mind that some individuals seek admission in more than one jurisdiction in a given year.

Pages 28–32 give data from the 2007 administrations of the Multistate Bar Examination (MBE) and the Multistate Professional Responsibility Examination (MPRE). Pages 33 and 34 show the use, by jurisdiction, of the Multistate Essay Examination (MEE) and the Multistate Performance Test (MPT).

Persons Taking and Passing the 2007 Bar Examination	8
Persons Taking and Passing the 2007 Bar Examination by Source of Legal Education	10
First-Time Exam Takers and Repeaters in 2007	12
2007 First-Time Exam Takers and Repeaters from ABA-Approved Law Schools	16
Attorneys' Examinations in 2007	20
Examinations Administered to Disbarred or Suspended Attorneys as a Condition of Reinstatement in 2007	20
Ten-Year Summary of Bar Passage Rates 1998–2007	21
2007 Admissions to the Bar by Examination, on Motion, and by Diploma Privilege	24
Admissions to the Bar by Jurisdiction 2003–2007	25

Multistate Bar Examination

Jurisdictions Using the MBE in 2007	28
MBE Summary Statistics	29
Number of Applicants Taking the MBE.....	29
MBE Applicants per Year	29
National Mean Scaled Scores for the MBE.....	30
2007 MBE Score Distributions	30
MBE Mean Scaled Scores by Year	30

Multistate Professional Responsibility Examination

Jurisdictions Using the MPRE in 2007 with Pass/Fail Standard Indicated	31
2007 MPRE Information	32
2007 MPRE Score Distributions	32
Number of Applicants Taking the MPRE	32
MPRE Applicants per Year.....	32

Multistate Essay Examination

Jurisdictions Using the MEE in 2007	33
---	----

Multistate Performance Test

Jurisdictions Using the MPT in 2007	34
---	----

PERSONS TAKING AND PASSING THE 2007 BAR EXAMINATION

<i>Jurisdiction</i>	<i>Days of Testing</i>	<i>Taking February</i>	<i>Passing February</i>	<i>Percent Passing</i>	<i>Taking July</i>	<i>Passing July</i>	<i>Percent Passing</i>	<i>Total Taking</i>	<i>Total Passing</i>	<i>Percent Passing</i>
Alabama	2.5	256	120	47%	521	374	72%	777	494	64%
Alaska	2.5	54	26	48%	75	52	69%	129	78	60%
Arizona	2	377	226	60%	686	522	76%	1,063	748	70%
Arkansas	2.5	123	78	63%	240	176	73%	363	254	70%
California	3	5,167	1,900	37%	8,151	4,571	56%	13,318	6,471	49%
Colorado	2	480	290	60%	939	686	73%	1,419	976	69%
Connecticut	2	374	258	69%	813	658	81%	1,187	916	77%
Delaware	2.5	<i>No February Examination</i>			240	148	62%	240	148	62%
District of Columbia	2	312	163	52%	275	155	56%	587	318	54%
Florida	2	1,640	923	56%	2,926	2,101	72%	4,566	3,024	66%
Georgia	2	506	309	61%	1,356	1,083	80%	1,862	1,392	75%
Guam	2	6	4	67%	11	9	82%	17	13	76%
Hawaii	2	144	95	66%	201	148	74%	345	243	70%
Idaho	2.5	70	53	76%	141	108	77%	211	161	76%
Illinois	2	1,153	822	71%	2,837	2,444	86%	3,990	3,266	82%
Indiana	2	281	197	70%	535	425	79%	816	622	76%
Iowa	3	94	63	67%	285	250	88%	379	313	83%
Kansas	2	193	165	85%	255	225	88%	448	390	87%
Kentucky	2	213	149	70%	411	332	81%	624	481	77%
Louisiana	3	248	143	58%	640	397	62%	888	540	61%
Maine	2	80	62	78%	130	107	82%	210	169	80%
Maryland	2	533	282	53%	1,403	1,008	72%	1,936	1,290	67%
Massachusetts	2	695	408	59%	2,129	1,760	83%	2,824	2,168	77%
Michigan	2	400	274	69%	848	676	80%	1,248	950	76%
Minnesota	2	219	162	74%	871	794	91%	1,090	956	88%
Mississippi	3	129	103	80%	245	199	81%	374	302	81%
Missouri	2	357	265	74%	798	707	89%	1,155	972	84%
Montana	3	51	49	96%	94	80	85%	145	129	89%

<i>Jurisdiction</i>	<i>Days of Testing</i>	<i>Taking February</i>	<i>Passing February</i>	<i>Percent Passing</i>	<i>Taking July</i>	<i>Passing July</i>	<i>Percent Passing</i>	<i>Total Taking</i>	<i>Total Passing</i>	<i>Percent Passing</i>
Nebraska	1.5	28	18	64%	99	87	88%	127	105	83%
Nevada	2.5	331	175	53%	488	320	66%	819	495	60%
New Hampshire	2	54	36	67%	139	113	81%	193	149	77%
New Jersey	2	1,077	589	55%	3,050	2,406	79%	4,127	2,995	73%
New Mexico	2	141	110	78%	241	188	78%	382	298	78%
New York	2	3,538	1,566	44%	10,907	7,701	71%	14,445	9,267	64%
North Carolina	2	508	266	52%	894	646	72%	1,402	912	65%
North Dakota	2	18	9	50%	47	36	77%	65	45	69%
N. Mariana Islands	2	3	2	67%	5	5	100%	8	7	88%
Ohio	2.5	494	312	63%	1,251	1,017	81%	1,745	1,329	76%
Oklahoma	2	121	96	79%	350	303	87%	471	399	85%
Oregon	2	264	198	75%	531	391	74%	795	589	74%
Palau	3	—	—	—	—	—	—	—	—	—
Pennsylvania	2	724	402	56%	2,004	1,559	78%	2,728	1,961	72%
Puerto Rico ^a	2.5	412	166	40%	737	311	42%	1,149	477	42%
Rhode Island	2	52	37	71%	203	155	76%	255	192	75%
South Carolina	3	203	152	75%	552	448	81%	755	600	79%
South Dakota	2	30	26	87%	63	53	84%	93	79	85%
Tennessee	2	262	158	60%	695	524	75%	957	682	71%
Texas	2.5	1,087	705	65%	2,826	2,268	80%	3,913	2,973	76%
Utah	2	133	102	77%	301	248	82%	434	350	81%
Vermont	2	39	24	62%	68	47	69%	107	71	66%
Virgin Islands	2	15	10	67%	33	17	52%	48	27	56%
Virginia	2	596	323	54%	1,502	1,081	72%	2,098	1,404	67%
Washington	2.5	446	379	85%	907	661	73%	1,353	1,040	77%
West Virginia	2	109	58	53%	204	138	68%	313	196	63%
Wisconsin	2	124	110	89%	210	187	89%	334	297	89%
Wyoming	2.5	38	15	39%	86	62	72%	124	77	62%
TOTALS		25,002	13,633	55%	56,449	41,167	73%	81,451	54,800	67%

a. Examinations are administered in March and September in Puerto Rico.

PERSONS TAKING AND PASSING THE 2007 BAR EXAMINATION BY SOURCE OF LEGAL EDUCATION

Jurisdiction	ABA-Approved Law School			Non-ABA-Approved Law School			Law School Outside the USA			Law Office Study		
	Taking	Passing	Percent Passing	Taking	Passing	Percent Passing	Taking	Passing	Percent Passing	Taking	Passing	Percent Passing
Alabama	498	414	83%	277	80	29%	2	0	0%	—	—	—
Alaska	129	78	60%	—	—	—	—	—	—	—	—	—
Arizona	1,051	743	71%	10	5	50%	2	0	0%	—	—	—
Arkansas	363	254	70%	—	—	—	—	—	—	—	—	—
California	9,545	5,501	58%	3,207 ^a	864	27%	560	104	19%	6	2	33%
Colorado	1,409	973	69%	1	0	0%	9	3	33%	—	—	—
Connecticut	1,103	894	81%	67	18	27%	17	4	24%	—	—	—
Delaware	240	148	62%	—	—	—	—	—	—	—	—	—
District of Columbia	512	302	59%	75	16	21%	—	—	—	—	—	—
Florida	4,565	3,023	66%	1	1	100%	—	—	—	—	—	—
Georgia	1,794	1,385	77%	66	5	8%	2	2	100%	—	—	—
Guam	17	13	76%	—	—	—	—	—	—	—	—	—
Hawaii	344	242	70%	—	—	—	1	1	100%	—	—	—
Idaho	211	161	76%	—	—	—	—	—	—	—	—	—
Illinois	3,969	3,254	82%	21	12	57%	—	—	—	—	—	—
Indiana	816	622	76%	—	—	—	—	—	—	—	—	—
Iowa	379	313	83%	—	—	—	—	—	—	—	—	—
Kansas	448	390	87%	—	—	—	—	—	—	—	—	—
Kentucky	624	481	77%	—	—	—	—	—	—	—	—	—
Louisiana	864	535	62%	—	—	—	24	5	21%	—	—	—
Maine	209	169	81%	1	0	0%	—	—	—	—	—	—
Maryland	1,922	1,285	67%	14	5	36%	—	—	—	—	—	—
Massachusetts	2,442	2,014	82%	362	139	38%	20	15	75%	—	—	—
Michigan	1,248	950	76%	—	—	—	—	—	—	—	—	—
Minnesota	1,090	956	88%	—	—	—	—	—	—	—	—	—
Mississippi	374	302	81%	—	—	—	—	—	—	—	—	—
Missouri	1,135	970	85%	1	0	0%	19	2	11%	—	—	—

a. California's Non-ABA-Approved Law School applicants include some who did not earn J.D. degrees.

<i>Jurisdiction</i>	<i>ABA-Approved Law School</i>			<i>Non-ABA-Approved Law School</i>			<i>Law School Outside the USA</i>			<i>Law Office Study</i>		
	<i>Taking</i>	<i>Passing</i>	<i>Percent Passing</i>	<i>Taking</i>	<i>Passing</i>	<i>Percent Passing</i>	<i>Taking</i>	<i>Passing</i>	<i>Percent Passing</i>	<i>Taking</i>	<i>Passing</i>	<i>Percent Passing</i>
Montana	145	129	89%	—	—	—	—	—	—	—	—	—
Nebraska	127	105	83%	—	—	—	—	—	—	—	—	—
Nevada	809	492	61%	6	2	33%	4	1	25%	—	—	—
New Hampshire	165	134	81%	26	15	58%	2	0	0%	—	—	—
New Jersey	4,127	2,995	73%	—	—	—	—	—	—	—	—	—
New Mexico	380	296	78%	1	1	100%	1	1	100%	—	—	—
New York	10,367	7,877	76%	8	3	38%	4,049	1,385	34%	21	2	10%
North Carolina	1,402	912	65%	—	—	—	—	—	—	—	—	—
North Dakota	65	45	69%	—	—	—	—	—	—	—	—	—
N. Mariana Islands	8	7	88%	—	—	—	—	—	—	—	—	—
Ohio	1,734	1,328	77%	—	—	—	11	1	9%	—	—	—
Oklahoma	471	399	85%	—	—	—	—	—	—	—	—	—
Oregon	785	587	75%	5	2	40%	5	0	0%	—	—	—
Palau	—	—	—	—	—	—	—	—	—	—	—	—
Pennsylvania	2,728	1,961	72%	—	—	—	—	—	—	—	—	—
Puerto Rico	952	438	46%	195	39	20%	2	0	0%	—	—	—
Rhode Island	255	192	75%	—	—	—	—	—	—	—	—	—
South Carolina	755	600	79%	—	—	—	—	—	—	—	—	—
South Dakota	93	79	85%	—	—	—	—	—	—	—	—	—
Tennessee	710	555	78%	193	111	58%	54	16	30%	—	—	—
Texas	3,890	2,967	76%	9	4	44%	14	2	14%	—	—	—
Utah	434	350	81%	—	—	—	—	—	—	—	—	—
Vermont	96	68	71%	—	—	—	1	1	100%	10	2	20%
Virgin Islands	48	27	56%	—	—	—	—	—	—	—	—	—
Virginia	2,017	1,385	69%	—	—	—	70	16	23%	11	3	27%
Washington	1,325	1,021	77%	20	11	55%	—	—	—	8	8	100%
West Virginia	313	196	63%	—	—	—	—	—	—	—	—	—
Wisconsin	329	292	89%	5	5	100%	—	—	—	—	—	—
Wyoming	124	77	62%	—	—	—	—	—	—	—	—	—
TOTALS	71,955	51,886	72%	4,571	1,338	29%	4,869	1,559	32%	56	17	30%

FIRST-TIME EXAM TAKERS AND REPEATERS IN 2007

<i>Jurisdiction</i>	<i>2007 Administration</i>	<i>First-Timers Taking</i>	<i>First-Timers Passing</i>	<i>First-Timers Percent Passing</i>	<i>Repeaters Taking</i>	<i>Repeaters Passing</i>	<i>Repeaters Percent Passing</i>
Alabama	February	162	99	61%	94	21	22%
	July	425	360	85%	96	14	15%
	Total	587	459	78%	190	35	18%
Alaska	February	24	17	71%	30	9	30%
	July	54	47	87%	21	5	24%
	Total	78	64	82%	51	14	27%
Arizona	February	228	161	71%	149	65	44%
	July	568	463	82%	118	59	50%
	Total	796	624	78%	267	124	46%
Arkansas	February	65	50	77%	58	28	48%
	July	197	160	81%	43	16	37%
	Total	262	210	80%	101	44	44%
California	February	1,560	829	53%	3,607	1,071	30%
	July	6,040	4,161	69%	2,111	410	19%
	Total	7,600	4,990	66%	5,718	1,481	26%
Colorado	February	298	212	71%	182	78	43%
	July	797	646	81%	142	40	28%
	Total	1,095	858	78%	324	118	36%
Connecticut	February	236	197	83%	138	61	44%
	July	738	636	86%	75	22	29%
	Total	974	833	86%	213	83	39%
Delaware	February	—	—	—	—	—	—
	July	172	122	71%	68	26	38%
	Total	172	122	71%	68	26	38%
Dist. Columbia	February	38	30	79%	274	133	49%
	July	103	77	75%	172	78	45%
	Total	141	107	76%	446	211	47%
Florida	February	1,053	747	71%	587	176	30%
	July	2,450	1,971	80%	476	130	27%
	Total	3,503	2,718	78%	1,063	306	29%
Georgia	February	312	235	75%	194	74	38%
	July	1,170	1,020	87%	186	63	34%
	Total	1,482	1,255	85%	380	137	36%
Guam	February	4	3	75%	2	1	50%
	July	10	8	80%	1	1	100%
	Total	14	11	79%	3	2	67%
Hawaii	February	104	83	80%	40	12	30%
	July	170	141	83%	31	7	23%
	Total	274	224	82%	71	19	27%
Idaho	February	52	43	83%	18	10	56%
	July	132	106	80%	9	2	22%
	Total	184	149	81%	27	12	44%

<i>Jurisdiction</i>	<i>2007 Administration</i>	<i>First-Timers Taking</i>	<i>First-Timers Passing</i>	<i>First-Timers Percent Passing</i>	<i>Repeaters Taking</i>	<i>Repeaters Passing</i>	<i>Repeaters Percent Passing</i>
Illinois	February	767	634	83%	386	188	49%
	July	2,593	2,344	90%	244	100	41%
	Total	3,360	2,978	89%	630	288	46%
Indiana	February	193	148	77%	88	49	56%
	July	463	403	87%	72	22	31%
	Total	656	551	84%	160	71	44%
Iowa	February	62	49	79%	32	14	44%
	July	261	240	92%	24	10	42%
	Total	323	289	89%	56	24	43%
Kansas	February	167	151	90%	26	14	54%
	July	236	217	92%	19	8	42%
	Total	403	368	91%	45	22	49%
Kentucky	February	117	100	85%	96	49	51%
	July	352	310	88%	59	22	37%
	Total	469	410	87%	155	71	46%
Louisiana	February	129	69	53%	119	74	62%
	July	532	349	66%	108	48	44%
	Total	661	418	63%	227	122	54%
Maine	February	57	47	82%	23	15	65%
	July	114	97	85%	16	10	63%
	Total	171	144	84%	39	25	64%
Maryland	February	239	146	61%	294	136	46%
	July	1,183	940	79%	220	68	31%
	Total	1,422	1,086	76%	514	204	40%
Massachusetts	February	385	284	74%	310	124	40%
	July	1,909	1,690	89%	220	70	32%
	Total	2,294	1,974	86%	530	194	37%
Michigan	February	297	237	80%	103	37	36%
	July	730	647	89%	118	29	25%
	Total	1,027	884	86%	221	66	30%
Minnesota	February	149	130	87%	70	32	46%
	July	830	780	94%	41	14	34%
	Total	979	910	93%	111	46	41%
Mississippi	February	92	82	89%	37	21	57%
	July	227	198	87%	18	1	6%
	Total	319	280	88%	55	22	40%
Missouri	February	252	205	81%	105	60	57%
	July	739	682	92%	59	25	42%
	Total	991	887	90%	164	85	52%
Montana	February	38	37	97%	13	12	92%
	July	91	77	85%	3	3	100%
	Total	129	114	88%	16	15	94%

FIRST-TIME EXAM TAKERS AND REPEATERS IN 2007

<i>Jurisdiction</i>	<i>2007 Administration</i>	<i>First-Timers Taking</i>	<i>First-Timers Passing</i>	<i>First-Timers Percent Passing</i>	<i>Repeaters Taking</i>	<i>Repeaters Passing</i>	<i>Repeaters Percent Passing</i>
Nebraska	February	14	9	64%	14	9	64%
	July	92	85	92%	7	2	29%
	Total	106	94	89%	21	11	52%
Nevada	February	197	128	65%	134	47	35%
	July	368	291	79%	120	29	24%
	Total	565	419	74%	254	76	30%
New Hampshire	February	42	33	79%	12	3	25%
	July	127	109	86%	12	4	33%
	Total	169	142	84%	24	7	29%
New Jersey	February	572	402	70%	505	187	37%
	July	2,682	2,260	84%	368	146	40%
	Total	3,254	2,662	82%	873	333	38%
New Mexico	February	120	100	83%	21	10	48%
	July	220	182	83%	21	6	29%
	Total	340	282	83%	42	16	38%
New York	February	1,418	866	61%	2,120	700	33%
	July	9,152	7,241	79%	1,755	460	26%
	Total	10,570	8,107	77%	3,875	1,160	30%
North Carolina	February	268	172	64%	240	94	39%
	July	749	599	80%	145	47	32%
	Total	1,017	771	76%	385	141	37%
North Dakota	February	9	5	56%	9	4	44%
	July	39	33	85%	8	3	38%
	Total	48	38	79%	17	7	41%
N. Mariana Islands	February	3	2	67%	—	—	—
	July	4	4	100%	1	1	100%
	Total	7	6	86%	1	1	100%
Ohio	February	271	214	79%	223	98	44%
	July	1,094	964	88%	157	53	34%
	Total	1,365	1,178	86%	380	151	40%
Oklahoma	February	92	80	87%	29	16	55%
	July	321	295	92%	29	8	28%
	Total	413	375	91%	58	24	41%
Oregon	February	137	114	83%	127	84	66%
	July	466	374	80%	65	17	26%
	Total	603	488	81%	192	101	53%
Palau	February	—	—	—	—	—	—
	July	—	—	—	—	—	—
	Total	—	—	—	—	—	—
Pennsylvania	February	336	250	74%	388	152	39%
	July	1,767	1,495	85%	237	64	27%
	Total	2,103	1,745	83%	625	216	35%

<i>Jurisdiction</i>	<i>2007 Administration</i>	<i>First-Timers Taking</i>	<i>First-Timers Passing</i>	<i>First-Timers Percent Passing</i>	<i>Repeaters Taking</i>	<i>Repeaters Passing</i>	<i>Repeaters Percent Passing</i>
Puerto Rico	February	140	60	43%	272	106	39%
	July	483	267	55%	254	44	17%
	Total	623	327	52%	526	150	29%
Rhode Island	February	36	29	81%	16	8	50%
	July	179	141	79%	24	14	58%
	Total	215	170	79%	40	22	55%
South Carolina	February	142	114	80%	61	38	62%
	July	511	421	82%	41	27	66%
	Total	653	535	82%	102	65	64%
South Dakota	February	21	19	90%	9	7	78%
	July	58	51	88%	5	2	40%
	Total	79	70	89%	14	9	64%
Tennessee	February	156	108	69%	106	50	47%
	July	599	497	83%	96	27	28%
	Total	755	605	80%	202	77	38%
Texas	February	608	457	75%	479	248	52%
	July	2,458	2,119	86%	368	149	40%
	Total	3,066	2,576	84%	847	397	47%
Utah	February	95	79	83%	38	23	61%
	July	283	241	85%	18	7	39%
	Total	378	320	85%	56	30	54%
Vermont	February	25	16	64%	14	8	57%
	July	58	42	72%	10	5	50%
	Total	83	58	70%	24	13	54%
Virgin Islands	February	11	9	82%	4	1	25%
	July	26	15	58%	7	2	29%
	Total	37	24	65%	11	3	27%
Virginia	February	295	189	64%	301	134	45%
	July	1,312	1,026	78%	190	55	29%
	Total	1,607	1,215	76%	491	189	38%
Washington	February	266	234	88%	180	145	81%
	July	815	612	75%	92	49	53%
	Total	1,081	846	78%	272	194	71%
West Virginia	February	9	5	56%	100	53	53%
	July	143	107	75%	61	31	51%
	Total	152	112	74%	161	84	52%
Wisconsin	February	105	98	93%	19	12	63%
	July	193	176	91%	17	11	65%
	Total	298	274	92%	36	23	64%
Wyoming	February	27	14	52%	11	1	9%
	July	69	53	77%	17	9	53%
	Total	96	67	70%	28	10	36%
TOTALS	February	12,495	8,831	71%	12,507	4,802	38%
	July	47,554	38,592	81%	8,895	2,575	29%
	Total	60,049	47,423	79%	21,402	7,377	34%

2007 FIRST-TIME EXAM TAKERS AND REPEATERS FROM ABA-APPROVED LAW SCHOOLS

<i>Jurisdiction</i>	<i>2007 Administration</i>	<i>ABA First-Timers Taking</i>	<i>ABA First-Timers Passing</i>	<i>ABA First-Timers Percent Passing</i>	<i>ABA Repeaters Taking</i>	<i>ABA Repeaters Passing</i>	<i>ABA Repeaters Percent Passing</i>
Alabama	February	97	73	75%	24	8	33%
	July	360	330	92%	17	3	18%
	Total	457	403	88%	41	11	27%
Alaska	February	24	17	71%	30	9	30%
	July	54	47	87%	21	5	24%
	Total	78	64	82%	51	14	27%
Arizona	February	223	159	71%	148	65	44%
	July	564	461	82%	116	58	50%
	Total	787	620	79%	264	123	47%
Arkansas	February	65	50	77%	58	28	48%
	July	197	160	81%	43	16	37%
	Total	262	210	80%	101	44	44%
California	February	883	511	58%	2,243	848	38%
	July	5,232	3,840	73%	1,187	302	25%
	Total	6,115	4,351	71%	3,430	1,150	34%
Colorado	February	297	212	71%	181	78	43%
	July	791	643	81%	140	40	29%
	Total	1,088	855	79%	321	118	37%
Connecticut	February	222	193	87%	112	55	49%
	July	709	626	88%	60	20	33%
	Total	931	819	88%	172	75	44%
Delaware	February	—	—	—	—	—	—
	July	172	122	71%	68	26	38%
	Total	172	122	71%	68	26	38%
Dist. Columbia	February	33	30	91%	243	127	52%
	July	84	69	82%	152	76	50%
	Total	117	99	85%	395	203	51%
Florida	February	1,053	746	71%	586	176	30%
	July	2,450	1,971	80%	476	130	27%
	Total	3,503	2,717	78%	1,062	306	29%
Georgia	February	310	234	75%	165	74	45%
	July	1,168	1,019	87%	151	58	38%
	Total	1,478	1,253	85%	316	132	42%
Guam	February	4	3	75%	2	1	50%
	July	10	8	80%	1	1	100%
	Total	14	11	79%	3	2	67%
Hawaii	February	104	83	80%	40	12	30%
	July	170	141	83%	30	6	20%
	Total	274	224	82%	70	18	26%
Idaho	February	52	43	83%	18	10	56%
	July	132	106	80%	9	2	22%
	Total	184	149	81%	27	12	44%

<i>Jurisdiction</i>	<i>2007 Administration</i>	<i>ABA First-Timers Taking</i>	<i>ABA First-Timers Passing</i>	<i>ABA First-Timers Percent Passing</i>	<i>ABA Repeaters Taking</i>	<i>ABA Repeaters Passing</i>	<i>ABA Repeaters Percent Passing</i>
Illinois	February	759	628	83%	381	187	49%
	July	2,589	2,340	90%	240	99	41%
	Total	3,348	2,968	89%	621	286	46%
Indiana	February	193	148	77%	88	49	56%
	July	463	403	87%	72	22	31%
	Total	656	551	84%	160	71	44%
Iowa	February	62	49	79%	32	14	44%
	July	261	240	92%	24	10	42%
	Total	323	289	89%	56	24	43%
Kansas	February	167	151	90%	26	14	54%
	July	236	217	92%	19	8	42%
	Total	403	368	91%	45	22	49%
Kentucky	February	117	100	85%	96	49	51%
	July	352	310	88%	59	22	37%
	Total	469	410	87%	155	71	46%
Louisiana	February	121	69	57%	119	72	61%
	July	516	349	68%	108	45	42%
	Total	637	418	66%	227	117	52%
Maine	February	57	47	82%	23	15	65%
	July	113	97	86%	16	10	63%
	Total	170	144	85%	39	25	64%
Maryland	February	235	144	61%	291	134	46%
	July	1,179	940	80%	217	67	31%
	Total	1,414	1,084	77%	508	201	40%
Massachusetts	February	305	242	79%	212	104	49%
	July	1,794	1,623	90%	131	45	34%
	Total	2,099	1,865	89%	343	149	43%
Michigan	February	297	237	80%	103	37	36%
	July	730	647	89%	118	29	25%
	Total	1,027	884	86%	221	66	30%
Minnesota	February	149	130	87%	70	32	46%
	July	830	780	94%	41	14	34%
	Total	979	910	93%	111	46	41%
Mississippi	February	92	82	89%	37	21	57%
	July	227	198	87%	18	1	6%
	Total	319	280	88%	55	22	40%
Missouri	February	245	204	83%	102	59	58%
	July	735	682	93%	53	25	47%
	Total	980	886	90%	155	84	54%
Montana	February	38	37	97%	13	12	92%
	July	91	77	85%	3	3	100%
	Total	129	114	88%	16	15	94%

2007 FIRST-TIME EXAM TAKERS AND REPEATERS FROM ABA-APPROVED LAW SCHOOLS

<i>Jurisdiction</i>	<i>2007 Administration</i>	<i>ABA First-Timers Taking</i>	<i>ABA First-Timers Passing</i>	<i>ABA First-Timers Percent Passing</i>	<i>ABA Repeaters Taking</i>	<i>ABA Repeaters Passing</i>	<i>ABA Repeaters Percent Passing</i>
Nebraska	February	14	9	64%	14	9	64%
	July	92	85	92%	7	2	29%
	Total	106	94	89%	21	11	52%
Nevada	February	194	127	65%	131	46	35%
	July	366	290	79%	118	29	25%
	Total	560	417	74%	249	75	30%
New Hampshire	February	27	22	81%	9	3	33%
	July	121	107	88%	8	2	25%
	Total	148	129	87%	17	5	29%
New Jersey	February	572	402	70%	505	187	37%
	July	2,682	2,260	84%	368	146	40%
	Total	3,254	2,662	82%	873	333	38%
New Mexico	February	119	99	83%	21	10	48%
	July	219	181	83%	21	6	29%
	Total	338	280	83%	42	16	38%
New York	February	927	688	74%	1,171	462	39%
	July	7,415	6,449	87%	854	278	33%
	Total	8,342	7,137	86%	2,025	740	37%
North Carolina	February	268	172	64%	240	94	39%
	July	749	599	80%	145	47	32%
	Total	1,017	771	76%	385	141	37%
North Dakota	February	9	5	56%	9	4	44%
	July	39	33	85%	8	3	38%
	Total	48	38	79%	17	7	41%
N. Mariana Islands	February	3	2	67%	—	—	—
	July	4	4	100%	1	1	100%
	Total	7	6	86%	1	1	100%
Ohio	February	270	214	79%	222	98	44%
	July	1,091	963	88%	151	53	35%
	Total	1,361	1,177	86%	373	151	40%
Oklahoma	February	92	80	87%	29	16	55%
	July	321	295	92%	29	8	28%
	Total	413	375	91%	58	24	41%
Oregon	February	136	112	82%	123	84	68%
	July	463	374	81%	63	17	27%
	Total	599	486	81%	186	101	54%
Palau	February	—	—	—	—	—	—
	July	—	—	—	—	—	—
	Total	—	—	—	—	—	—
Pennsylvania	February	336	250	74%	388	152	39%
	July	1,767	1,495	85%	237	64	27%
	Total	2,103	1,745	83%	625	216	35%

<i>Jurisdiction</i>	<i>2007 Administration</i>	<i>ABA First-Timers Taking</i>	<i>ABA First-Timers Passing</i>	<i>ABA First-Timers Percent Passing</i>	<i>ABA Repeaters Taking</i>	<i>ABA Repeaters Passing</i>	<i>ABA Repeaters Percent Passing</i>
Puerto Rico	February	101	48	48%	223	93	42%
	July	444	263	59%	184	34	18%
	Total	545	311	57%	407	127	31%
Rhode Island	February	36	29	81%	16	8	50%
	July	179	141	79%	24	14	58%
	Total	215	170	79%	40	22	55%
South Carolina	February	142	114	80%	61	38	62%
	July	511	421	82%	41	27	66%
	Total	653	535	82%	102	65	64%
South Dakota	February	21	19	90%	9	7	78%
	July	58	51	88%	5	2	40%
	Total	79	70	89%	14	9	64%
Tennessee	February	129	94	73%	57	33	58%
	July	472	414	88%	52	14	27%
	Total	601	508	85%	109	47	43%
Texas	February	604	456	75%	475	247	52%
	July	2,453	2,118	86%	358	146	41%
	Total	3,057	2,574	84%	833	393	47%
Utah	February	95	79	83%	38	23	61%
	July	283	241	85%	18	7	39%
	Total	378	320	85%	56	30	54%
Vermont	February	20	14	70%	13	8	62%
	July	55	41	75%	8	5	63%
	Total	75	55	73%	21	13	62%
Virgin Islands	February	11	9	82%	4	1	25%
	July	26	15	58%	7	2	29%
	Total	37	24	65%	11	3	27%
Virginia	February	279	185	66%	283	130	46%
	July	1,286	1,020	79%	169	50	30%
	Total	1,565	1,205	77%	452	180	40%
Washington	February	260	228	88%	170	140	82%
	July	813	610	75%	82	43	52%
	Total	1,073	838	78%	252	183	73%
West Virginia	February	9	5	56%	100	53	53%
	July	143	107	75%	61	31	51%
	Total	152	112	74%	161	84	52%
Wisconsin	February	103	96	93%	19	12	63%
	July	190	173	91%	17	11	65%
	Total	293	269	92%	36	23	64%
Wyoming	February	27	14	52%	11	1	9%
	July	69	53	77%	17	9	53%
	Total	96	67	70%	28	10	36%
TOTALS	February	11,008	8,194	74%	9,784	4,249	43%
	July	44,520	37,249	84%	6,643	2,194	33%
	Total	55,528	45,443	82%	16,427	6,443	39%

ATTORNEYS' EXAMINATIONS IN 2007

<i>Jurisdiction</i>	<i>Taking February</i>	<i>Passing February</i>	<i>Percent Passing February</i>	<i>Taking July</i>	<i>Passing July</i>	<i>Percent Passing July</i>	<i>Total Taking</i>	<i>Total Passing</i>	<i>Total Percent Passing</i>
California	380	181	48%	335	125	37%	715	306	43%
Guam	3	2	67%	5	1	20%	8	3	38%
Maine	16	12	75%	12	8	67%	28	20	71%
Maryland	97	91	94%	75	72	96%	172	163	95%
Mississippi	10	10	100%	2	2	100%	12	12	100%
N. Mariana Islands	2	2	100%	—	—	—	2	2	100%
Palau	—	—	—	6	4	67%	6	4	67%
Rhode Island	27	21	78%	16	11	69%	43	32	74%
Utah	13	11	85%	4	4	100%	17	15	88%
TOTALS	548	330	60%	455	227	50%	1,003	557	56%

EXAMINATIONS ADMINISTERED TO DISBARRED OR SUSPENDED ATTORNEYS AS A CONDITION OF REINSTATEMENT IN 2007

<i>Jurisdiction</i>	<i>Taking</i>	<i>Passing</i>	<i>Percent Passing</i>
Colorado	4	3	75%
Michigan	1	1	100%
Mississippi	1	1	100%
Missouri	2	1	50%
North Dakota	2	0	0%
South Carolina	8	2	25%
Texas	5	1	20%
Virginia	1	1	100%
TOTALS	24	10	42%

TEN-YEAR SUMMARY OF BAR PASSAGE RATES 1998–2007

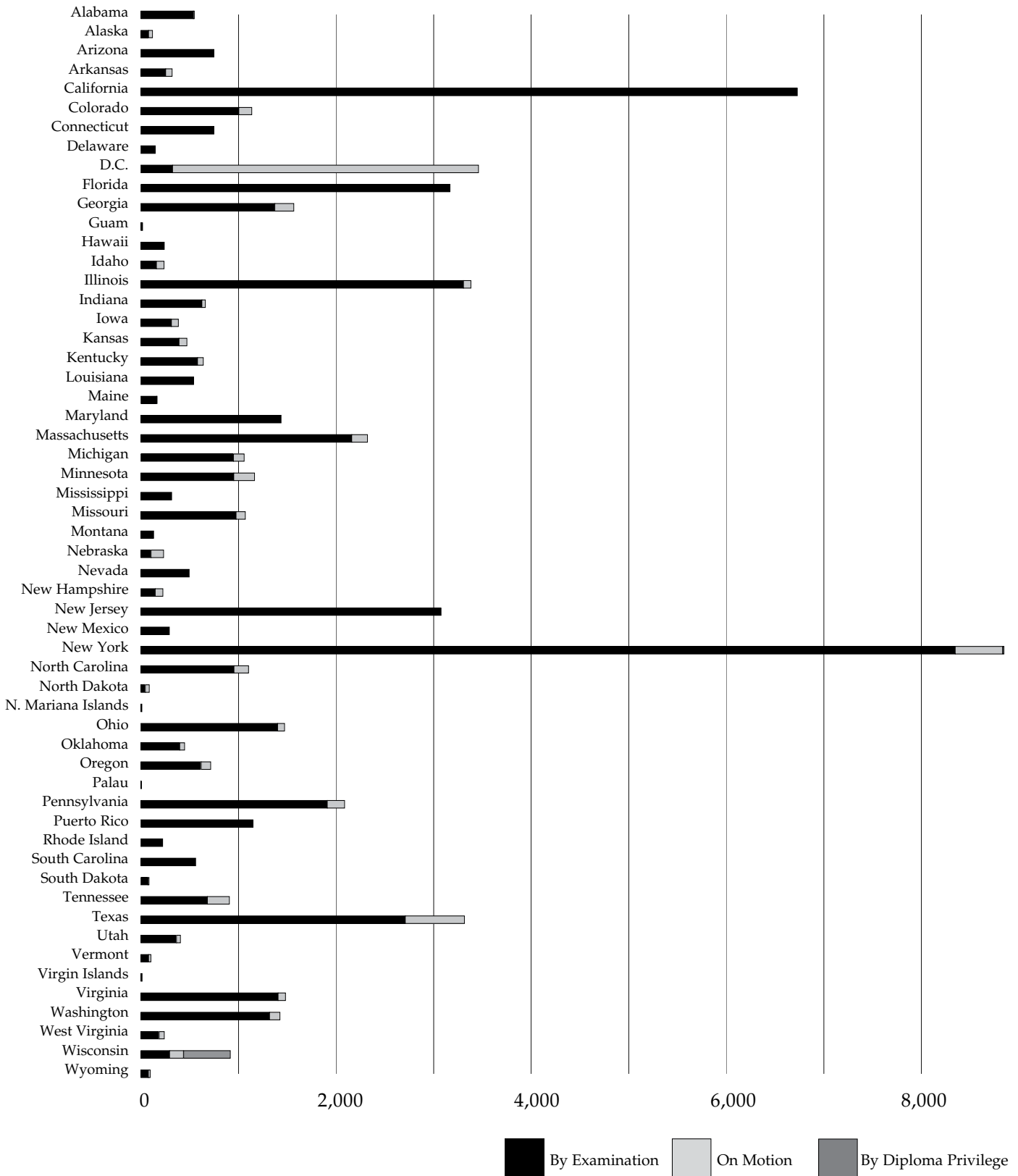
<i>Jurisdiction</i>		1998	1999	2000	2001	2002	2003	2004	2005	2006	2007
Alabama	Overall	64%	58%	55%	54%	55%	58%	63%	64%	65%	64%
	First-Time	78%	74%	71%	71%	78%	77%	83%	80%	80%	78%
Alaska	Overall	67%	58%	62%	69%	54%	56%	68%	63%	62%	60%
	First-Time	74%	67%	69%	77%	57%	73%	81%	75%	75%	82%
Arizona	Overall	73%	75%	73%	72%	70%	67%	67%	67%	68%	70%
	First-Time	78%	79%	80%	79%	77%	74%	74%	72%	75%	78%
Arkansas	Overall	67%	62%	49%	73%	68%	70%	69%	70%	69%	70%
	First-Time	74%	72%	59%	82%	80%	80%	78%	78%	80%	80%
California	Overall	48%	48%	50%	50%	45%	45%	44%	46%	47%	49%
	First-Time	64%	61%	64%	66%	61%	61%	60%	62%	65%	66%
Colorado	Overall	72%	74%	73%	73%	71%	70%	65%	68%	68%	69%
	First-Time	79%	81%	80%	79%	79%	75%	73%	78%	76%	78%
Connecticut	Overall	77%	74%	70%	75%	73%	76%	73%	74%	75%	77%
	First-Time	82%	79%	76%	81%	80%	82%	81%	81%	83%	86%
Delaware	Overall	61%	56%	63%	65%	62%	64%	61%	57%	59%	62%
	First-Time	70%	57%	69%	73%	69%	73%	67%	63%	67%	71%
District of Columbia	Overall	58%	59%	58%	59%	55%	51%	51%	51%	51%	54%
	First-Time	75%	80%	76%	69%	70%	70%	74%	69%	72%	76%
Florida	Overall	75%	72%	69%	71%	68%	67%	64%	60%	64%	66%
	First-Time	82%	80%	77%	80%	77%	76%	74%	71%	75%	78%
Georgia	Overall	70%	72%	69%	71%	70%	70%	72%	73%	76%	75%
	First-Time	81%	81%	81%	84%	83%	84%	85%	84%	86%	85%
Guam	Overall	42%	60%	35%	57%	53%	67%	53%	77%	75%	76%
	First-Time	52%	68%	44%	78%	70%	75%	67%	100%	70%	79%
Hawaii	Overall	73%	65%	66%	70%	68%	79%	66%	71%	71%	70%
	First-Time	80%	69%	75%	77%	77%	87%	74%	81%	77%	82%
Idaho	Overall	73%	72%	60%	71%	60%	70%	70%	74%	79%	76%
	First-Time	80%	74%	65%	78%	69%	78%	78%	80%	85%	81%
Illinois	Overall	76%	77%	76%	76%	72%	75%	76%	78%	79%	82%
	First-Time	81%	83%	83%	84%	81%	84%	85%	85%	87%	89%
Indiana	Overall	87%	79%	84%	76%	70%	70%	73%	75%	76%	76%
	First-Time	90%	83%	85%	81%	79%	78%	82%	84%	84%	84%
Iowa	Overall	79%	80%	81%	84%	80%	78%	80%	80%	81%	83%
	First-Time	84%	83%	86%	87%	86%	82%	87%	86%	88%	89%
Kansas	Overall	83%	85%	81%	76%	82%	78%	76%	76%	82%	87%
	First-Time	87%	88%	84%	81%	86%	83%	81%	81%	90%	91%
Kentucky	Overall	80%	78%	78%	78%	76%	70%	74%	72%	73%	77%
	First-Time	83%	83%	83%	82%	81%	76%	80%	80%	82%	87%

TEN-YEAR SUMMARY OF BAR PASSAGE RATES 1998-2007

<i>Jurisdiction</i>		1998	1999	2000	2001	2002	2003	2004	2005	2006	2007
Louisiana	Overall	62%	64%	65%	70%	67%	61%	69%	69%	70%	61%
	First-Time	62%	64%	64%	72%	65%	61%	70%	72%	76%	63%
Maine	Overall	70%	62%	59%	62%	62%	64%	63%	70%	73%	80%
	First-Time	75%	67%	60%	68%	69%	76%	71%	81%	81%	84%
Maryland	Overall	70%	65%	69%	65%	61%	62%	61%	65%	66%	67%
	First-Time	76%	72%	77%	74%	72%	72%	71%	74%	78%	76%
Massachusetts	Overall	69%	69%	68%	69%	66%	65%	73%	72%	77%	77%
	First-Time	78%	78%	77%	81%	79%	79%	84%	82%	87%	86%
Michigan	Overall	74%	68%	71%	64%	74%	67%	64%	64%	78%	76%
	First-Time	81%	77%	79%	73%	81%	75%	75%	75%	87%	86%
Minnesota	Overall	80%	81%	82%	86%	82%	85%	83%	81%	86%	88%
	First-Time	86%	88%	89%	92%	89%	91%	89%	88%	91%	93%
Mississippi	Overall	78%	82%	79%	88%	81%	86%	86%	85%	80%	81%
	First-Time	83%	82%	86%	91%	88%	92%	91%	88%	86%	88%
Missouri	Overall	79%	75%	73%	74%	73%	73%	81%	81%	82%	84%
	First-Time	84%	79%	78%	80%	81%	82%	88%	88%	88%	90%
Montana	Overall	89%	85%	88%	89%	79%	81%	79%	84%	91%	89%
	First-Time	89%	86%	89%	90%	78%	81%	83%	89%	92%	88%
Nebraska	Overall	84%	88%	81%	82%	76%	79%	77%	73%	80%	83%
	First-Time	86%	89%	85%	84%	81%	84%	86%	85%	83%	89%
Nevada	Overall	60%	64%	59%	64%	59%	61%	56%	59%	61%	60%
	First-Time	66%	69%	62%	70%	67%	65%	69%	68%	72%	74%
New Hampshire	Overall	70%	73%	66%	65%	60%	60%	56%	54%	77%	77%
	First-Time	76%	79%	71%	67%	67%	63%	63%	61%	82%	84%
New Jersey	Overall	63%	66%	63%	66%	63%	64%	69%	70%	73%	73%
	First-Time	70%	74%	72%	74%	71%	73%	78%	77%	81%	82%
New Mexico	Overall	86%	87%	86%	87%	86%	81%	79%	81%	86%	78%
	First-Time	92%	91%	89%	92%	89%	84%	85%	85%	91%	83%
New York	Overall	64%	64%	62%	65%	61%	63%	62%	62%	63%	64%
	First-Time	76%	74%	76%	76%	74%	75%	74%	74%	77%	77%
North Carolina	Overall	70%	69%	65%	68%	65%	65%	63%	64%	64%	65%
	First-Time	78%	76%	74%	79%	77%	75%	75%	71%	75%	76%
North Dakota	Overall	83%	85%	88%	91%	85%	75%	75%	83%	72%	69%
	First-Time	86%	89%	88%	94%	85%	78%	79%	90%	83%	79%
N. Mariana Islands	Overall	44%	43%	67%	55%	46%	60%	70%	100%	88%	88%
	First-Time	27%	29%	89%	71%	55%	50%	75%	100%	88%	86%
Ohio	Overall	69%	68%	67%	71%	65%	68%	67%	71%	74%	76%
	First-Time	76%	75%	75%	81%	76%	78%	80%	80%	83%	86%

<i>Jurisdiction</i>		1998	1999	2000	2001	2002	2003	2004	2005	2006	2007
Oklahoma	Overall	83%	80%	76%	77%	69%	71%	73%	82%	83%	85%
	First-Time	85%	83%	80%	82%	77%	80%	83%	89%	91%	91%
Oregon	Overall	64%	64%	68%	74%	71%	72%	67%	67%	72%	74%
	First-Time	70%	70%	73%	81%	78%	79%	75%	74%	80%	81%
Palau	Overall	<i>n/a</i>	40%	67%	100%	88%	67%	100%	71%	27%	—
	First-Time	100%	50%	71%	100%	88%	100%	100%	71%	27%	—
Pennsylvania	Overall	66%	66%	65%	67%	65%	67%	68%	70%	71%	72%
	First-Time	75%	73%	73%	75%	76%	76%	79%	80%	83%	83%
Puerto Rico	Overall	50%	48%	48%	46%	49%	48%	47%	38%	46%	42%
	First-Time	55%	58%	60%	56%	61%	56%	54%	46%	57%	52%
Rhode Island	Overall	61%	68%	59%	74%	57%	62%	70%	65%	71%	75%
	First-Time	69%	78%	64%	82%	68%	66%	76%	71%	77%	79%
South Carolina	Overall	75%	73%	79%	82%	78%	75%	77%	80%	77%	79%
	First-Time	80%	75%	82%	87%	81%	80%	82%	85%	78%	82%
South Dakota	Overall	86%	80%	83%	92%	93%	80%	69%	72%	77%	85%
	First-Time	86%	84%	88%	95%	93%	81%	71%	83%	85%	89%
Tennessee	Overall	70%	71%	77%	75%	67%	75%	77%	74%	75%	71%
	First-Time	76%	78%	82%	81%	76%	80%	83%	80%	79%	80%
Texas	Overall	73%	75%	72%	74%	68%	72%	68%	71%	74%	76%
	First-Time	80%	81%	80%	81%	77%	81%	77%	80%	82%	84%
Utah	Overall	91%	87%	91%	90%	84%	87%	87%	86%	83%	81%
	First-Time	92%	88%	93%	94%	86%	90%	89%	90%	89%	85%
Vermont	Overall	73%	71%	65%	66%	71%	75%	75%	73%	68%	66%
	First-Time	80%	80%	73%	76%	76%	82%	83%	80%	78%	70%
Virgin Islands	Overall	<i>n/a</i>	88%	56%	69%	56%	58%	55%	69%	73%	56%
	First-Time	<i>n/a</i>	87%	59%	73%	59%	66%	76%	70%	70%	65%
Virginia	Overall	65%	68%	65%	67%	64%	65%	64%	68%	68%	67%
	First-Time	71%	73%	72%	74%	74%	73%	72%	76%	74%	76%
Washington	Overall	71%	75%	76%	72%	71%	70%	73%	71%	78%	77%
	First-Time	74%	80%	80%	77%	76%	71%	79%	77%	80%	78%
West Virginia	Overall	76%	76%	73%	68%	64%	62%	69%	64%	60%	63%
	First-Time	82%	81%	78%	68%	72%	71%	77%	71%	64%	74%
Wisconsin	Overall	84%	88%	78%	75%	74%	74%	79%	77%	78%	89%
	First-Time	88%	89%	82%	79%	78%	81%	80%	80%	82%	92%
Wyoming	Overall	68%	61%	63%	82%	66%	67%	60%	72%	72%	62%
	First-Time	69%	67%	72%	82%	67%	68%	63%	80%	74%	70%
AVERAGES	Overall	66%	66%	65%	66%	63%	64%	64%	64%	67%	67%
	First-Time	76%	75%	75%	77%	74%	75%	75%	76%	78%	79%

2007 ADMISSIONS TO THE BAR BY EXAMINATION, ON MOTION, AND BY DIPLOMA PRIVILEGE



ADMISSIONS TO THE BAR BY JURISDICTION 2003–2007

<i>Jurisdiction</i>	<i>Admission by Examination</i>					<i>Admission on Motion</i>				
	2003	2004	2005	2006	2007	2003	2004	2005	2006	2007
Alabama	611	509	530	549	538	—	—	—	1	11
Alaska	78	80	83	92	78	14	30	39	30	43
Arizona	633	690	656	740	747	—	—	—	—	—
Arkansas	226	231	246	282	254	—	—	60	63	68
California	5,759	5,626	5,965	6,799	6,729	—	—	—	—	—
Colorado	790	715	865	950	1,003	84	94	124	155	136
Connecticut	734	691	758	848	747	25	12	—	—	—
Delaware	145	146	155	163	146	—	—	—	—	—
District of Columbia	337	337	305	334	325	2,157	2,629	2,741	3,621	3,137
Florida	2,674	2,863	2,980	3,133	3,166	—	—	—	—	—
Georgia	1,285	1,183	1,190	1,344	1,372	144	181	146	173	197
Guam	6	9	9	11	16	—	8	—	9	—
Hawaii	221	171	235	203	239	—	—	—	—	—
Idaho	136	128	154	110	158	65	66	51	62	80
Illinois	2,528	2,696	1,787	3,204	3,307	94	79	95	80	78
Indiana	528	589	618	595	626	47	71	67	93	37
Iowa	246	275	411	286	313	62	48	45	46	73
Kansas	373	378	362	292	390	—	—	44	140	84
Kentucky	392	461	644	459	581	51	54	55	47	60
Louisiana	547	707	738	640	540	—	—	—	—	—
Maine	135	178	163	149	161	—	—	4	7	8
Maryland	1,382	1,409	1,586	1,470	1,437	—	—	—	—	—
Massachusetts	1,847	1,839	1,887	2,139	2,160	182	168	163	198	164
Michigan	850	862	918	1,131	950	128	143	111	138	110
Minnesota	702	736	729	848	952	143	134	164	180	214
Mississippi	429	389	339	334	314	—	10	—	—	—
Missouri	876	981	917	961	976	56	87	93	138	96
Montana	119	145	155	157	129	—	—	—	—	—
Nebraska	144	157	141	132	105	102	111	105	97	129

ADMISSIONS TO THE BAR BY JURISDICTION 2003–2007

<i>Jurisdiction</i>	<i>Admission by Examination</i>					<i>Admission on Motion</i>				
	2003	2004	2005	2006	2007	2003	2004	2005	2006	2007
Nevada	387	451	476	498	495	—	—	—	—	—
New Hampshire	124	135	131	187	146	10	98	77	110	82
New Jersey	2,762	2,663	2,781	3,215	3,078	—	—	—	—	—
New Mexico	250	241	272	282	290	—	—	—	—	—
New York	7,875	8,103	8,058	8,138	8,349	383	389	457	503	487
North Carolina	753	721	851	918	954	54	95	99	117	152
North Dakota	32	44	55	35	46	22	22	28	29	42
N. Mariana Islands	12	16	3	13	10	—	11	—	—	—
Ohio	1,303	1,270	1,356	1,353	1,401	78	49	76	71	74
Oklahoma	345	346	418	450	398	29	64	97	65	51
Oregon	514	497	504	627	618	107	77	48	75	100
Palau	2	4	5	3	4	—	—	—	2	—
Pennsylvania	1,780	1,773	1,950	1,455	1,910	195	168	324	141	180
Puerto Rico	409	519	420	539	477	—	—	—	—	—
Rhode Island	172	193	157	199	222	—	—	—	—	—
South Carolina	362	396	465	463	561	—	—	—	—	—
South Dakota	77	84	92	85	73	—	13	18	19	12
Tennessee	586	694	680	753	682	128	161	145	214	228
Texas	2,711	2,614	2,727	2,793	2,711	236	284	303	450	608
Utah	326	310	390	364	365	11	49	12	36	41
Vermont	77	65	87	99	78	24	49	37	35	26
Virgin Islands	30	16	45	35	11	5	—	—	—	—
Virginia	1,114	1,175	1,301	1,337	1,405	88	71	72	94	78
Washington	1,941	1,094	1,000	1,108	1,318	257	241	60	143	110
West Virginia	208	235	214	221	188	48	51	47	53	53
Wisconsin	200	211	217	253	294	85	66	69	93	145
Wyoming	66	76	89	93	75	17	26	9	23	22
TOTALS	49,151	49,127	50,270	53,871	54,618	5,131	5,909	6,085	7,551	7,216

ADMISSIONS TO THE BAR BY JURISDICTION 2003–2007

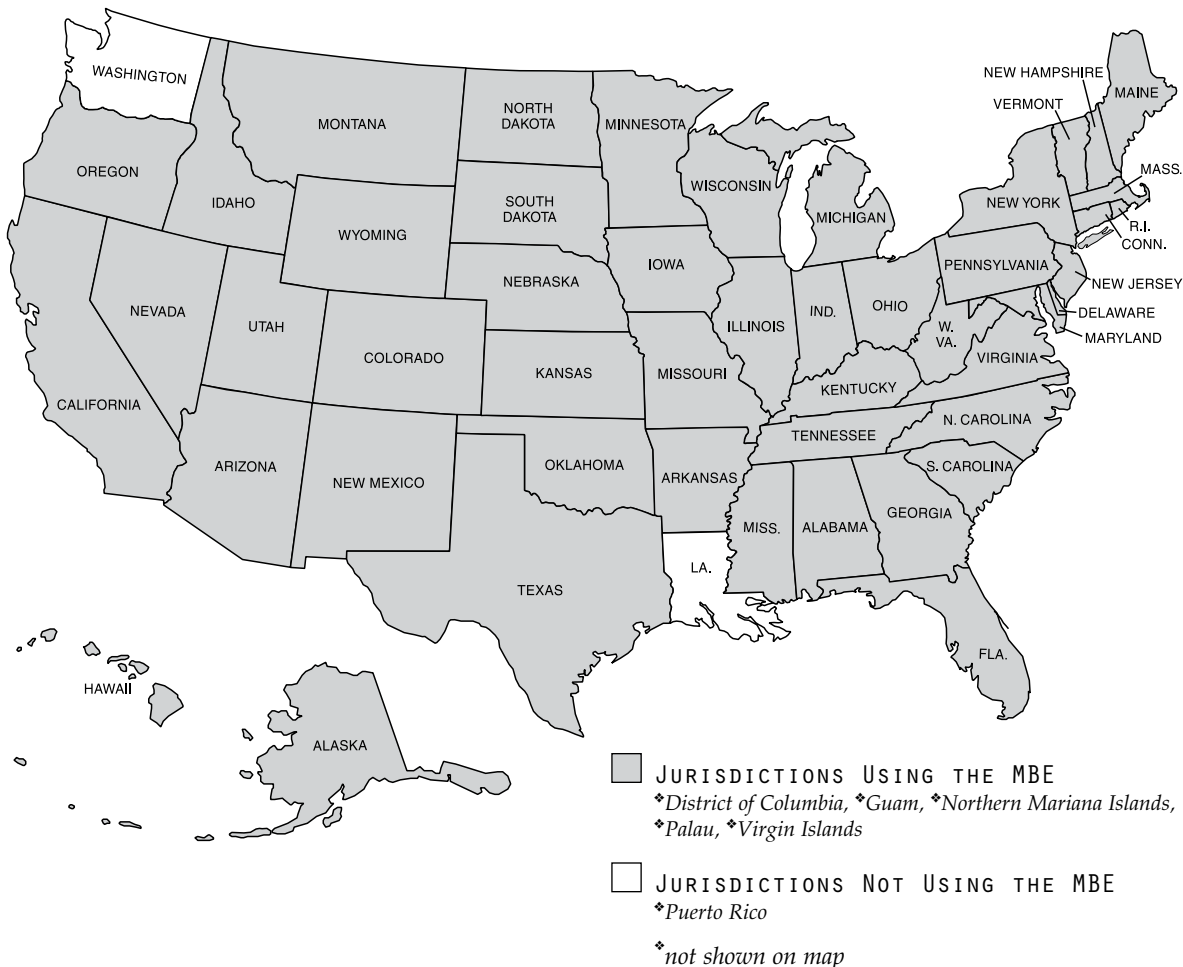
<i>Jurisdiction</i>	<i>Foreign Legal Consultants</i>					<i>Admission by Diploma Privilege</i>				
	2003	2004	2005	2006	2007	2003	2004	2005	2006	2007
Arizona	4	—	1	3	1	—	—	—	—	—
California	5	3	7	5	8	—	—	—	—	—
District of Columbia	15	9	9	7	13	—	—	—	—	—
Florida	29	31	30	24	28	—	—	—	—	—
Georgia	3	3	—	—	—	—	—	—	—	—
Illinois	3	1	1	2	2	—	—	—	—	—
Massachusetts	—	—	—	1	—	—	—	—	—	—
Michigan	1	—	1	—	1	—	—	—	—	—
Minnesota	1	—	—	—	—	—	—	—	—	—
New Jersey	1	1	—	1	1	—	—	—	—	—
New York	23	14	7	14	13	—	—	—	—	—
Ohio	1	2	1	—	—	—	—	—	—	—
Pennsylvania	—	—	—	—	1	—	—	—	—	—
Texas	—	3	2	3	2	—	—	—	—	—
Washington	—	—	1	—	1	—	—	—	—	—
Wisconsin	—	—	—	—	—	425	412	436	474	479
TOTALS	86	67	60	60	71	425	412	436	474	479

MULTISTATE BAR EXAMINATION

The National Conference of Bar Examiners has produced the Multistate Bar Examination (MBE) since 1972. In 2007, the MBE was used in 53 jurisdictions.

The MBE is a 200-item multiple-choice examination covering constitutional law, contracts, criminal law and procedure, evidence, real property, and torts. Both raw and scaled scores are computed for each applicant. Raw scores on different forms of the test are not comparable due to differences in the difficulty of test forms. Scaled scores are produced by a statistical procedure called equating that involves repeating items from previous examinations. A comparison of the performance of the current applicant population on the repeated items to performance of the prior applicant group allows conclusions to be drawn about the relative difficulty of the new items on the exam, and test scores are adjusted accordingly. Scaled scores are comparable across administrations of the examination.

JURISDICTIONS USING THE MBE IN 2007



*The current-year statistics do not reflect data from hand-scored answer sheets; in each administration of the MBE, an insignificant number of answer sheets are hand scored for various reasons. Statistics for administrations before 2000 may include those for applicants with hand-scored answer sheets.

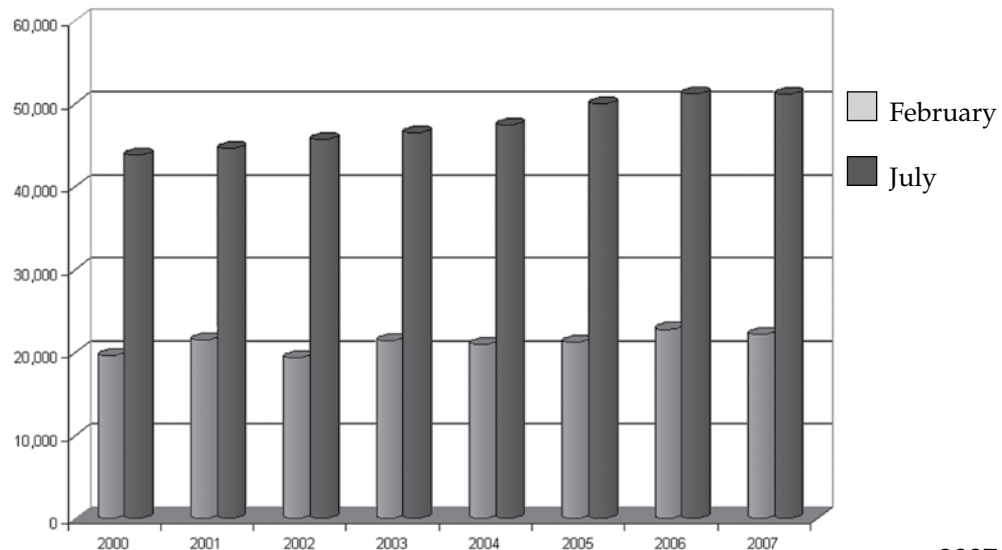
MBE SUMMARY STATISTICS*

February 2007		July 2007	
22,250 Applicants	Total Scaled Scores	50,181 Applicants	Total Scaled Scores
Mean	136.88	Mean	143.73
Standard Deviation	15.58	Standard Deviation	15.86
Maximum	183	Maximum	188
Minimum	71	Minimum	78
Median	137	Median	145

NUMBER OF APPLICANTS TAKING THE MBE*

	February	July	Total		February	July	Total		February	July	Total
1972	4,955	11,672	16,627	1984	16,938	38,511	55,449	1996	19,054	42,811	61,865
1973	6,182	16,826	23,008	1985	18,303	39,149	57,452	1997	18,468	44,128	62,596
1974	9,316	23,728	33,044	1986	17,825	39,774	57,599	1998	18,475	43,540	62,015
1975	10,963	24,835	35,798	1987	18,606	39,335	57,941	1999	19,646	43,417	63,063
1976	12,610	28,381	40,991	1988	18,610	39,284	57,894	2000	19,673	43,791	63,464
1977	13,738	28,608	42,346	1989	18,821	38,900	57,721	2001	20,288	44,637	64,925
1978	13,715	29,171	42,886	1990	17,382	39,750	57,132	2002	19,399	45,732	65,131
1979	15,341	34,818	50,159	1991	17,954	39,621	57,575	2003	20,204	46,486	66,690
1980	16,948	36,368	53,316	1992	17,755	42,064	59,819	2004	20,946	47,433	68,379
1981	17,289	36,846	54,135	1993	17,497	42,505	60,002	2005	21,265	49,998	71,263
1982	18,150	36,995	55,145	1994	18,267	43,127	61,394	2006	22,824	51,176	74,000
1983	17,964	38,034	55,998	1995	17,605	42,498	60,103	2007	22,250	50,181	72,431

MBE APPLICANTS PER YEAR*



MULTISTATE BAR EXAMINATION

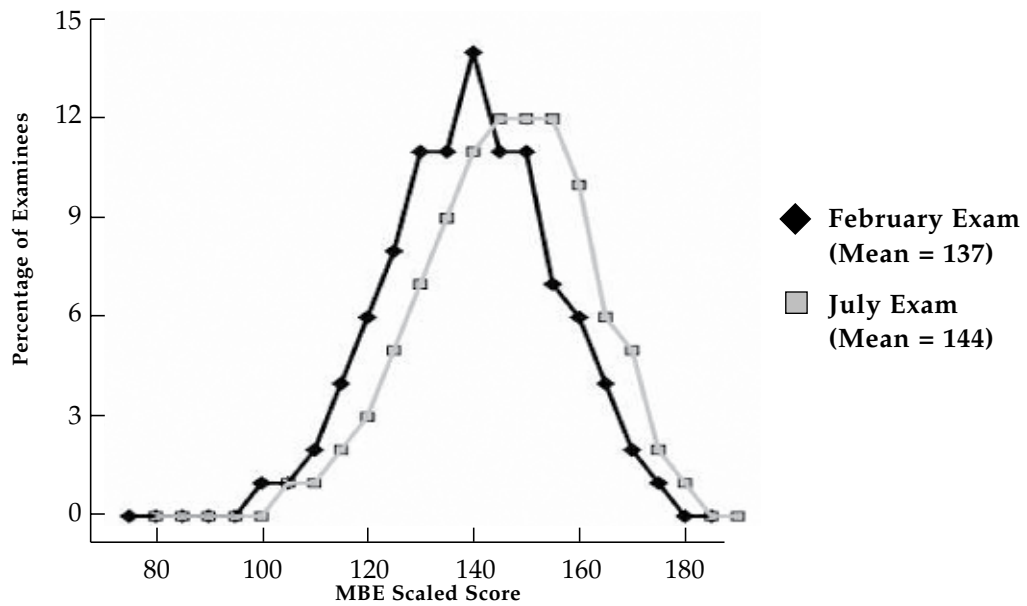
*The current-year statistics do not reflect data from hand-scored answer sheets; in each administration of the MBE, an insignificant number of answer sheets are hand scored for various reasons. Statistics for administrations before 2000 may include those for applicants with hand-scored answer sheets.

NATIONAL MEAN SCALED SCORES FOR THE MBE*

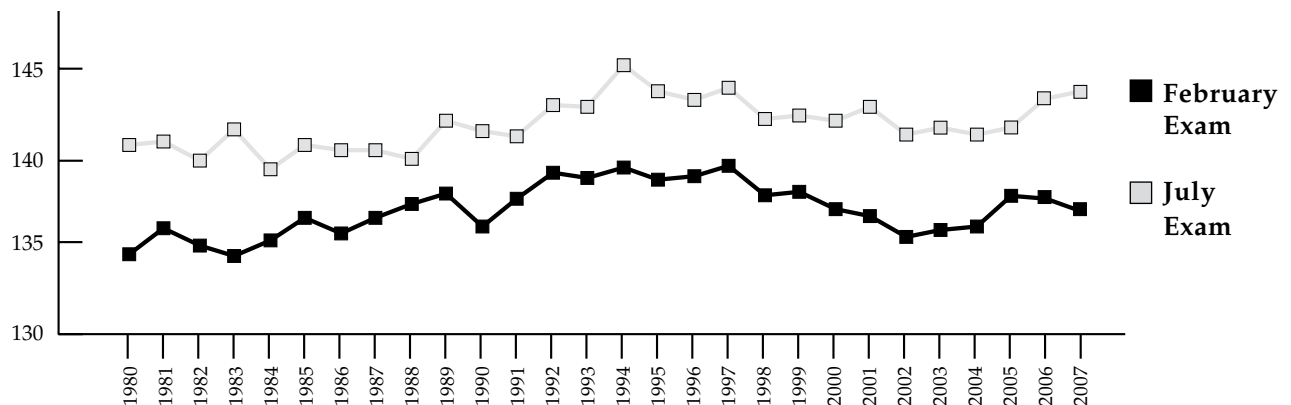
	1980	1981	1982	1983	1984	1985	1986	1987	1988	1989	1990	1991	1992	1993	1994
February	134.3	135.8	134.8	134.2	135.1	136.4	135.5	136.4	137.2	137.8	135.9	137.5	139.0	138.7	139.3
July	140.6	140.8	139.7	141.5	139.2	140.6	140.3	140.3	139.8	142.0	141.4	141.1	142.9	142.8	145.2

	1995	1996	1997	1998	1999	2000	2001	2002	2003	2004	2005	2006	2007
February	138.6	138.8	139.4	137.7	137.9	136.9	136.5	135.3	135.7	135.9	137.7	137.5	136.9
July	143.7	143.2	143.9	142.1	142.3	142.0	142.8	141.2	141.6	141.2	141.6	143.3	143.7

2007 MBE SCORE DISTRIBUTIONS*



MBE MEAN SCALED SCORES BY YEAR*

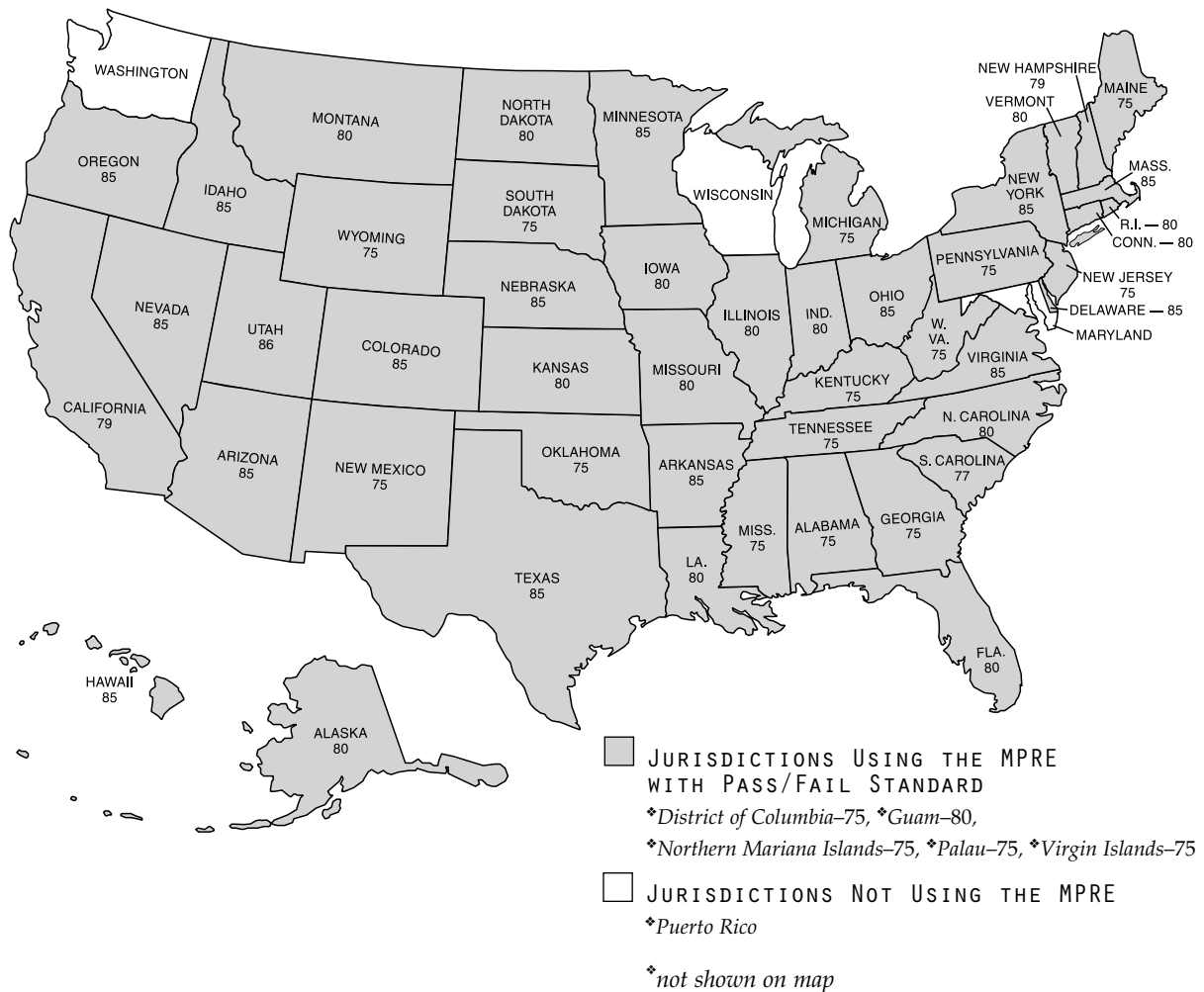


MULTISTATE PROFESSIONAL RESPONSIBILITY EXAMINATION

The National Conference of Bar Examiners has administered the Multistate Professional Responsibility Examination (MPRE) since 1980. In 2007, the MPRE was used in 52 jurisdictions.

The MPRE consists of 60 multiple-choice questions. Both raw and scaled scores are computed for each examinee. Raw scores on different forms of the test are not comparable due to differences in the difficulty of test forms. Scaled scores are produced by a statistical procedure called equating that involves repeating items from previous examinations. A comparison of the performance of the current examinee population on the repeated items to performance of the prior examinee group allows conclusions to be drawn about the relative difficulty of the new items on the exam, and test scores are adjusted accordingly. Scaled scores are produced on a range of 50 to 150 and are comparable across administrations of the examination.

JURISDICTIONS USING THE MPRE IN 2007 WITH PASS/FAIL STANDARD INDICATED

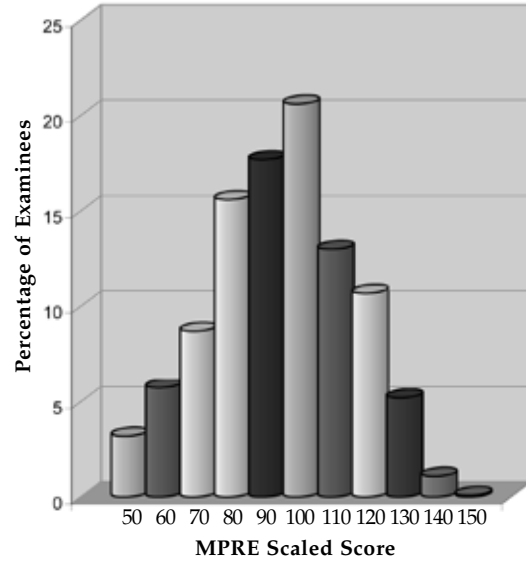


MULTISTATE PROFESSIONAL RESPONSIBILITY EXAMINATION

2007 MPRE SCORE DISTRIBUTIONS

2007 MPRE INFORMATION

	March	August	November	2007 Total
Number of Examinees	21,724	17,107	23,404	62,235
Mean Scaled Score	98.54	98.01	99.17	98.63
Standard Deviation	19.77	19.98	19.85	19.86
Maximum	150	150	150	150
Minimum	50	50	50	50

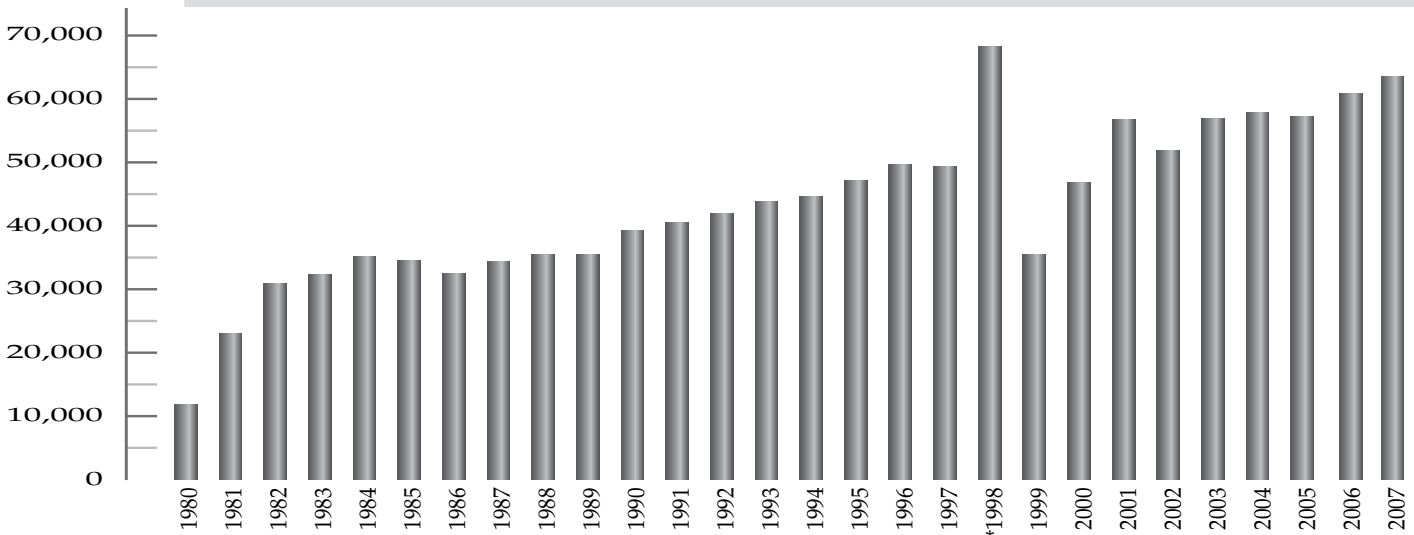


NUMBER OF APPLICANTS TAKING THE MPRE

	1980	1981	1982	1983	1984	1985	1986	1987	1988	1989	1990	1991	1992	1993	1994	1995
Number of Examinees	11,913	22,982	30,902	32,402	35,113	34,507	32,456	34,358	35,440	35,532	39,192	40,448	41,884	43,782	44,664	47,213
	1996	1997	1998	1999	2000	2001	2002	2003	2004	2005	2006	2007				
Number of Examinees	49,680	49,348	68,230*	35,444	46,864	56,713	51,825	56,854	57,829	57,297	60,978	62,235				

MPRE APPLICANTS PER YEAR

*In November 1998, almost twice the usual number of examinees took the MPRE. This record number is likely attributable to anticipation of a change to the test specifications that became effective in March 1999.

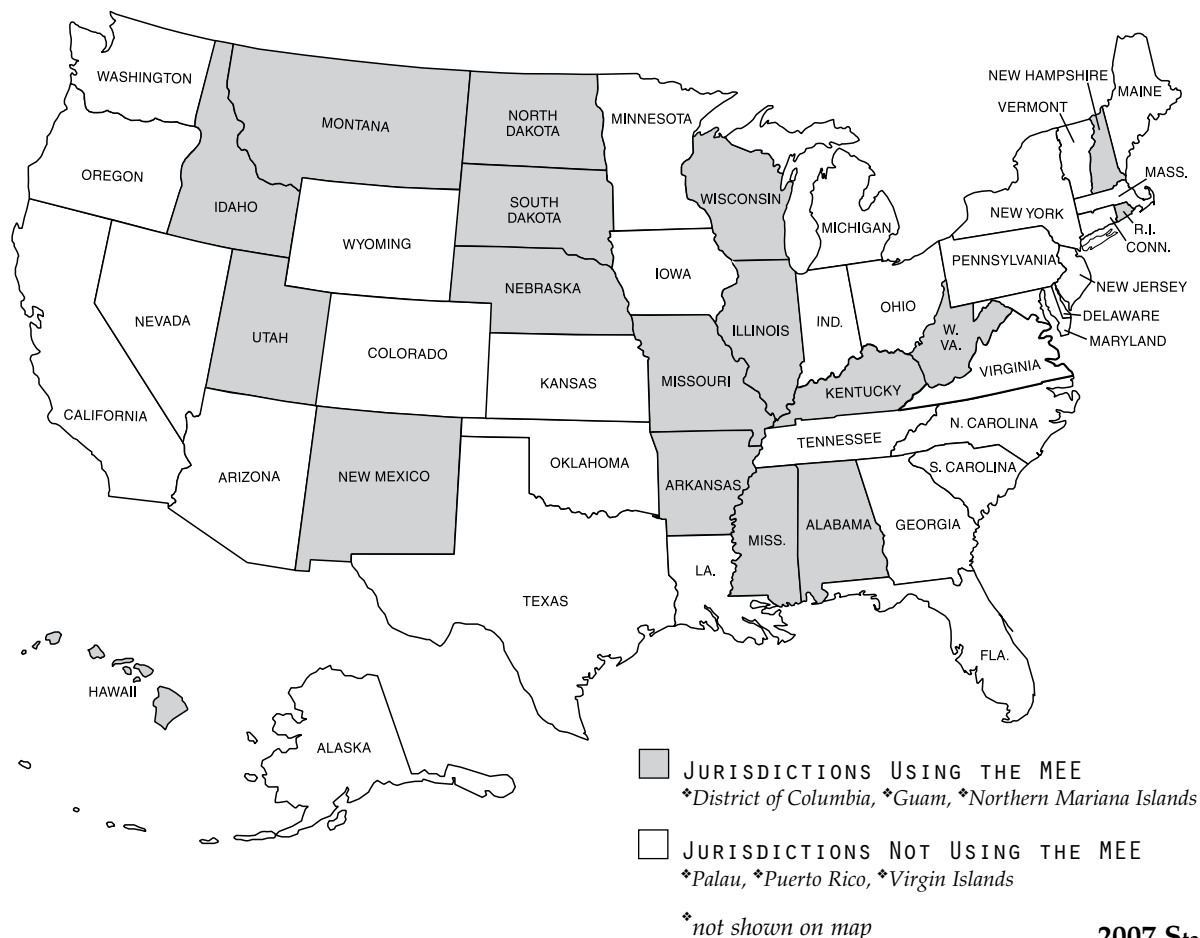


MULTISTATE ESSAY EXAMINATION

The National Conference of Bar Examiners has produced the Multistate Essay Examination (MEE) since 1988. In 2007, the MEE was used in 21 jurisdictions.

The MEE is an essay examination offering nine 30-minute questions; user jurisdictions may elect which of the nine questions they wish to use. The areas of law that may be covered by the questions are business associations (agency and partnership; corporations and limited liability companies), conflict of laws, constitutional law, contracts, criminal law and procedure, evidence, family law, federal civil procedure, real property, torts, trusts and estates (decedents' estates; trusts and future interests), and Uniform Commercial Code (negotiable instruments (commercial paper); secured transactions). Some questions may include issues in more than one area of law. The purpose of the MEE is to test the applicant's ability to (1) identify legal issues raised by a hypothetical factual situation; (2) separate material which is relevant from that which is not; (3) present a reasoned analysis of the relevant issues in a clear, concise, and well-organized composition; and (4) demonstrate an understanding of the fundamental legal principles relevant to the probable solution of the issues raised by the factual situation. Each jurisdiction determines its own policy with regard to the relative weight given to the MEE and other scores. Grading of the MEE is the exclusive responsibility of the jurisdiction administering the exam.

JURISDICTIONS USING THE MEE IN 2007



MULTISTATE PERFORMANCE TEST

The National Conference of Bar Examiners has produced the Multistate Performance Test (MPT) since 1997. In 2007, the MPT was used in 33 jurisdictions.

The MPT is designed to test an applicant’s ability to use fundamental lawyering skills in a realistic situation. Each test evaluates an applicant’s ability to complete a task that a beginning lawyer should be able to accomplish. The MPT requires applicants to (1) sort detailed factual materials and separate relevant from irrelevant facts; (2) analyze statutory, case, and administrative materials for relevant principles of law; (3) apply the relevant law to the relevant facts in a manner likely to resolve a client’s problem; (4) identify and resolve ethical dilemmas, when present; (5) communicate effectively in writing; and (6) complete a lawyering task within time constraints. Each jurisdiction determines its own policy with regard to the relative weight given to the MPT and other scores. Grading of the MPT is the exclusive responsibility of the jurisdiction administering the exam.

JURISDICTIONS USING THE MPT IN 2007

